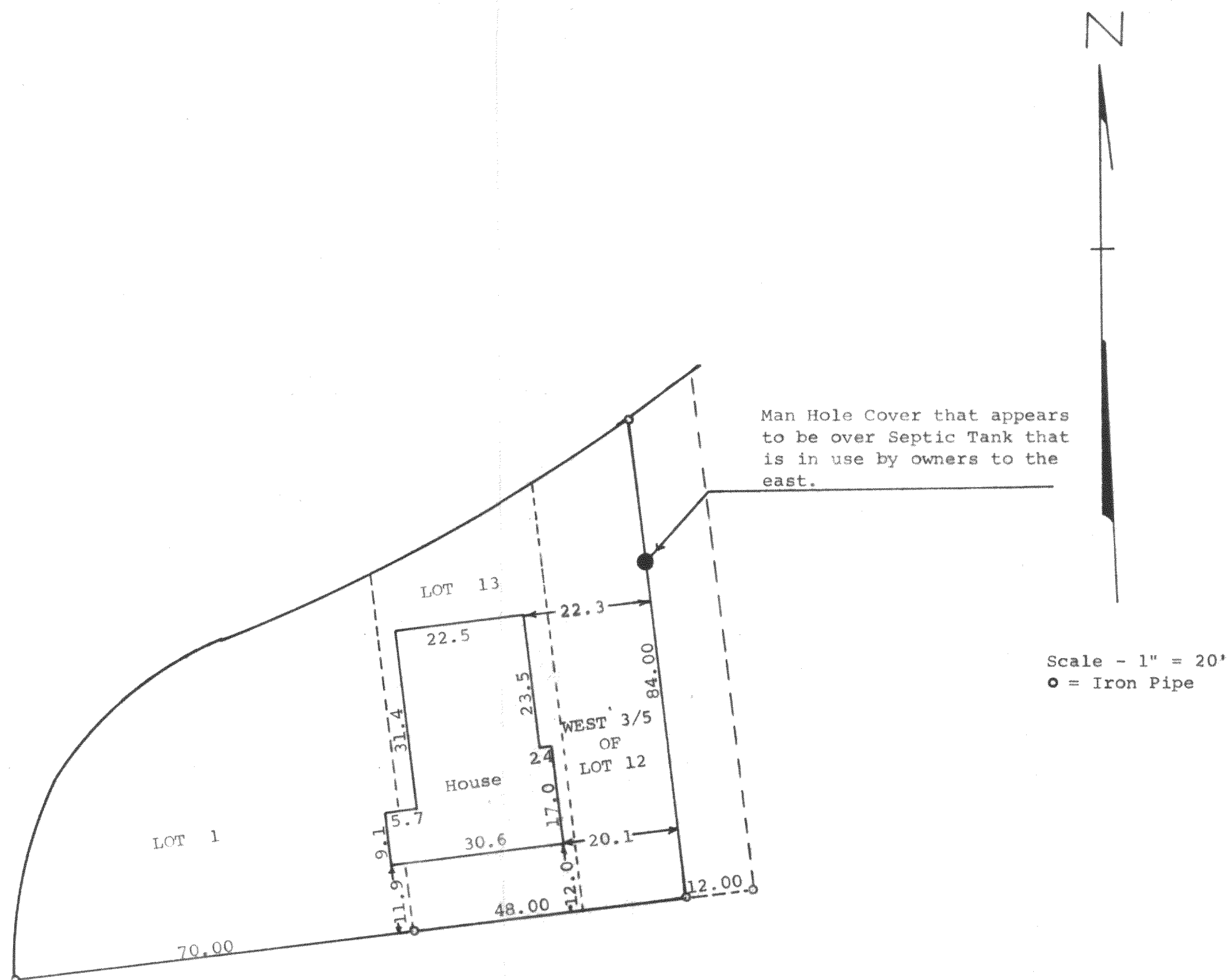
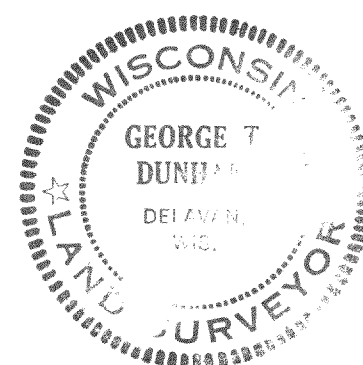


GEORGE T. DUNHAM
SURVEYING & SUBDIVIDING
DELAVER, WISCONSIN



Plat of survey of Lots 1, 13 and the westerly 3/5ths of Lot 12 in Block "P" of Delavan Lake Assembly Grounds, a subdivision located in Section 21, T 2 N, R 16 E, Walworth County, Wisconsin.
September 27, 1972

George T. Dunham
George T. Dunham, Surveyor



FDLA-159
" 167

216-438